

SUPPLEMENTARY MATERIAL

**SYNTHESIS AND CRYSTAL STRUCTURE OF CYTOTOXIC
COPPER(II) COMPLEXES BASED ON 2,2'-BIPYRIDINE / 1,10-
PHENANTHROLINE AND 5-(4-CHLOROPHENYL)-1H-
TETRAZOLE**

© 2023 Yu. A. Golubeva¹, K. S. Smirnova¹, L. S. Klyushova², A. S. Berezin¹,
E. V. Lider^{1,*}

¹*Nikolaev Institute of Inorganic Chemistry, Novosibirsk, Russia*

² *Institute of Molecular Biology and Biophysics of Federal State Budget Scientific
Institution "Federal Research Center of Fundamental and Translational Medicine"
(IMBB FRC FTM), Novosibirsk, Russia*

*e-mail: lisalider@ngs.ru

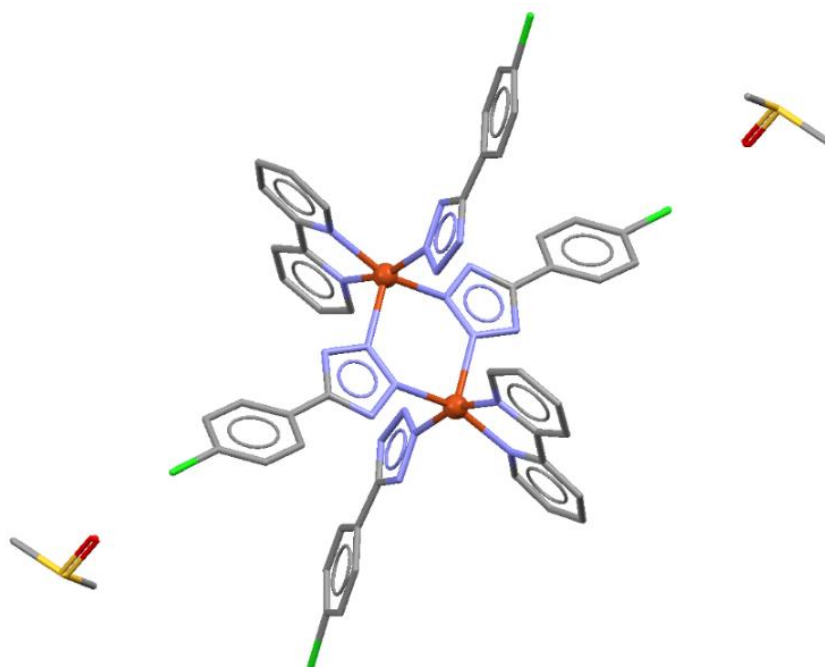


Fig. 1. The structure of $[\text{Cu}_2(\text{Bipy})_2\text{L}_4] \cdot 2(\text{CH}_3)_2\text{SO}$ (Ib). Hydrogen atoms are not shown.

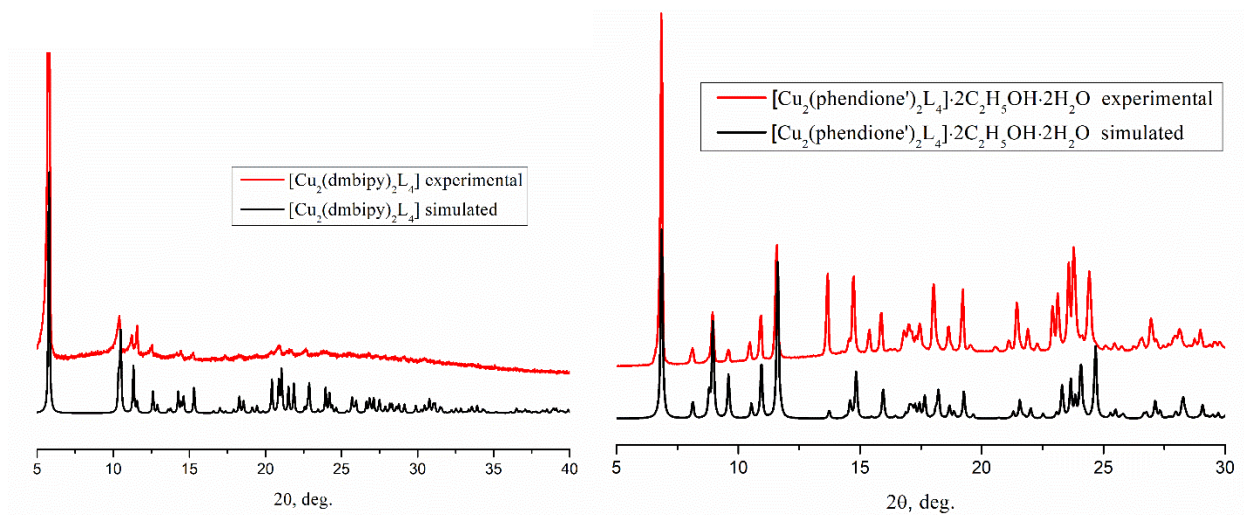


Fig. 2. Simulated (black line) and experimental (red line) X-ray powder patterns for complexes $[\text{Cu}_2(\text{Dmbipy})_2\text{L}_4]$ (II) and $[\text{Cu}_2(\text{Phendione})_2\text{L}_4] \cdot 2\text{C}_2\text{H}_5\text{OH} \cdot 2\text{H}_2\text{O}$ (V).

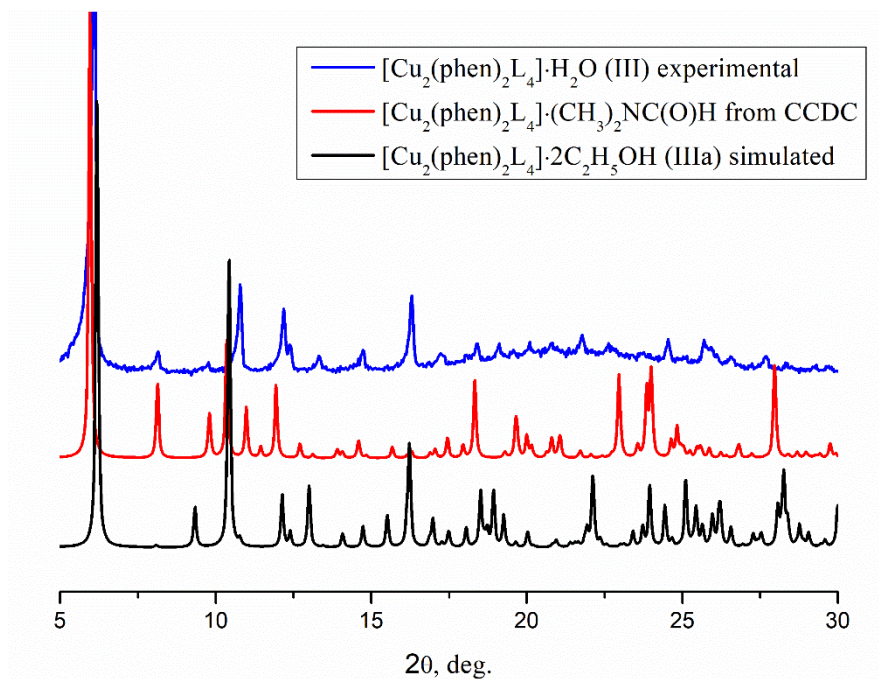


Fig. 3. Simulated X-ray powder patterns for complexes $[\text{Cu}_2(\text{Phen})_2\text{L}_4] \cdot 2\text{C}_2\text{H}_5\text{OH}$ (IIIa) (black line), $[\text{Cu}_2(\text{Phen})_2\text{L}_4] \cdot (\text{CH}_3)_2\text{NCH}$ (CCDC 1551672) (red line) and experimental (blue line) X-ray powder pattern for $[\text{Cu}_2(\text{Phen})_2\text{L}_4] \cdot \text{H}_2\text{O}$ (III).

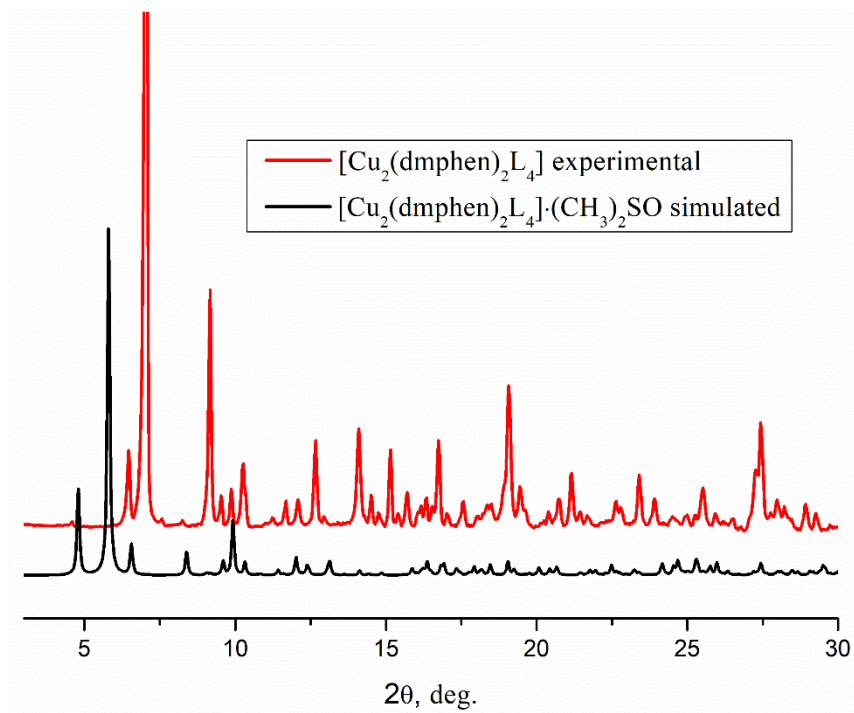


Fig. 4. Simulated X-ray powder pattern for complex $[\text{Cu}_2(\text{Dmphen})_2\text{L}_4] \cdot 2,5(\text{CH}_3)_2\text{SO} \cdot \text{H}_2\text{O}$ (IVa) (black line) and experimental (red line) X-ray powder pattern for $[\text{Cu}_2(\text{Dmphen})_2\text{L}_4]$ (IV).